

For the University of Michigan Men's Glee Club

Sound Off

words and music by Paul Rardin

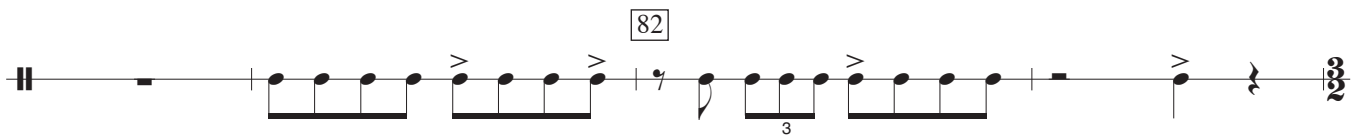
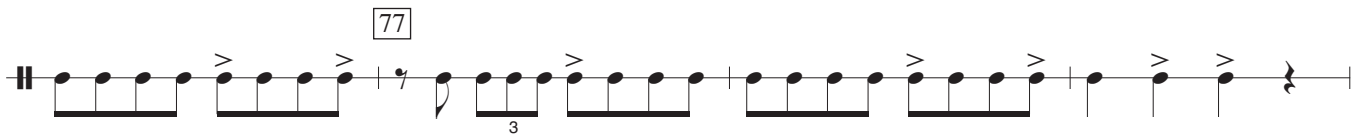
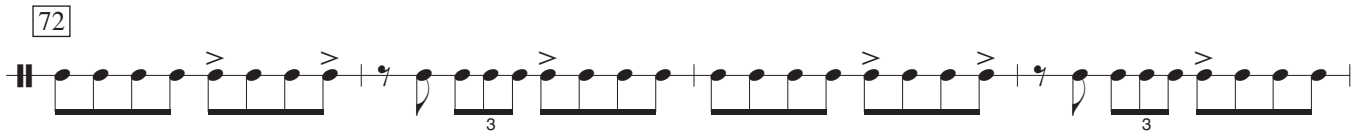
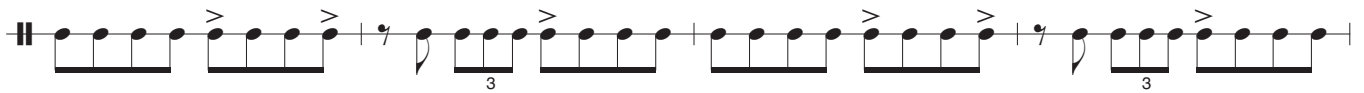
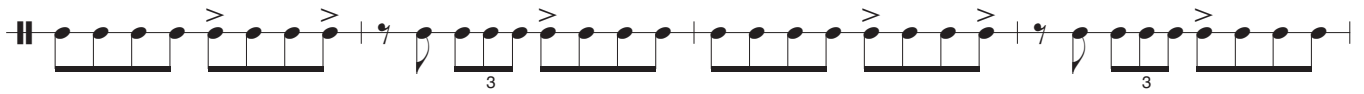
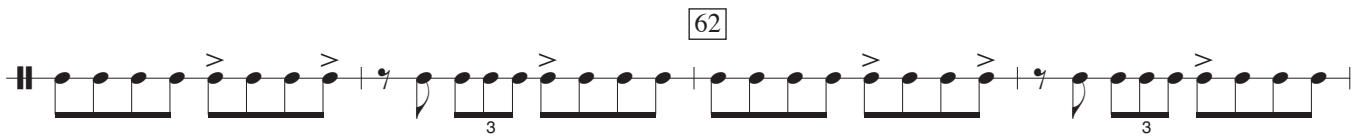
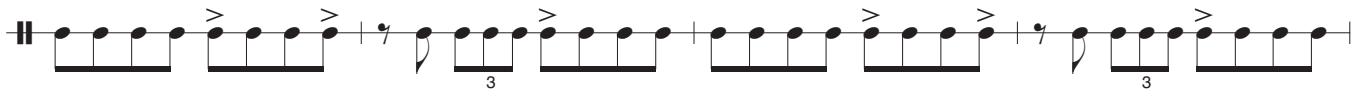
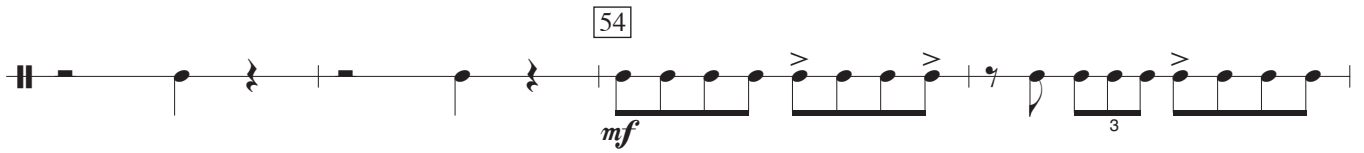
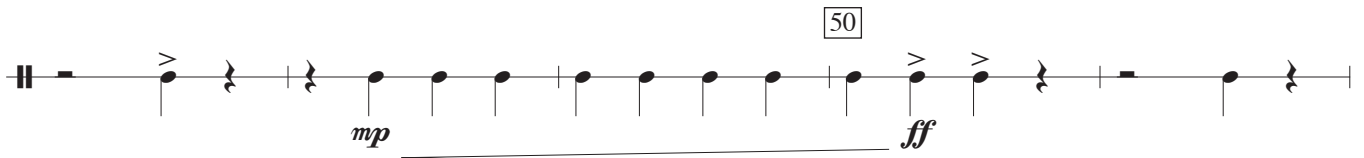
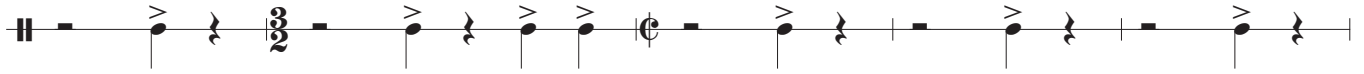
Swing eighth notes $\text{♩} = 80$

5-Gallon Paint Bucket (drum sticks)

4 3 6 5 11

mf

17 20 27 34 41



Musical staff with treble clef, 3/8 time signature, and a series of quarter notes with accents.

Musical staff with treble clef, 3/8 time signature, starting with *mp* and ending with *ff*, including a box labeled 91.

Musical staff with treble clef, 3/8 time signature, starting with *mf*, including a box labeled 95 and a triplet.

Musical staff with treble clef, 3/8 time signature, including a box labeled 101 and triplets.

Musical staff with treble clef, 3/8 time signature, including triplets.

Musical staff with treble clef, 3/8 time signature, including a box labeled 107 and triplets.

Musical staff with treble clef, 3/8 time signature, including a box labeled 111 and triplets.

Musical staff with treble clef, 3/8 time signature, including a box labeled 3 and triplets.

Musical staff with treble clef, 3/8 time signature, including a box labeled 121, triplets, and a key signature change to 3/8.

Musical staff with treble clef, 3/8 time signature, ending with *mp*.

130

ff

134

mf

139

150

156

165

174 *mp* *ff* 3

180 *f* *ff* *mp*

187

195 *ff* *p*

199 *mp* *mf*

208 *f* *p* *ff*

216

